

BALDOR® • RELIANCE 

Product Information Packet

UCLE153

1.5-3HP,3450RPM,1PH,60HZ,3532LC,N

Part Detail							
Revision:	K	Status:	PRD/A	Change #:		Proprietary:	No
Type:	AC	Elec. Spec:	35WGT138	CD Diagram:	CD0017A02	Mfg Plant:	
Mech. Spec:	35E2504	Layout:	35LYE2504	Poles:	02	Created Date:	03-05-2014
Base:	RG	Eff. Date:	05-31-2018	Leads:	2#14 A PH,2#18 B PH		

Specs			
Catalog Number:	UCLE153	Inverter Code:	Not Inverter
Enclosure:	TEAO	KVA Code:	G
Frame:	143TZ	Lifting Lugs:	No Lifting Lugs
Frame Material:	Steel	Locked Bearing Indicator:	Locked Bearing
Output @ Frequency:	3.000 HP @ 60 HZ	Motor Lead Quantity/Wire Size:	2 @ 14 AWG, A PH
	1.500 HP @ 60 HZ	Motor Lead Exit:	Pipe Or Pipe Adaptor
Synchronous Speed @ Frequency:	3600 RPM @ 60 HZ	Motor Lead Termination:	Flying Leads
Voltage @ Frequency:	230.0 V @ 60 HZ	Motor Type:	3532LC
XP Class and Group:	None	Mounting Arrangement:	F1
XP Division:	Not Applicable	Power Factor:	95
Agency Approvals:	UR	Product Family:	General Purpose
	CSA	Product Type:	FARM DUTY
Auxillary Box:	No Auxillary Box	Pulley End Bearing Type:	Ball
Auxillary Box Lead Termination:	None	Pulley Face Code:	Standard
Base Indicator:	Rigid	Pulley Shaft Indicator:	Tapped & Key
Bearing Grease Type:	Polyrex EM (-20F +300F)	Rodent Screen:	None
Blower:	None	RoHS Status:	ROHS COMPLIANT
Current @ Voltage:	12.500 A @ 230.0 V	Shaft Extension Location:	Pulley End

	13.700 A @ 208.0 V	Shaft Ground Indicator:	No Shaft Grounding
Design Code:	L	Shaft Rotation:	Reversible
Drip Cover:	No Drip Cover	Shaft Slinger Indicator:	No Slinger
Duty Rating:	CONT	Speed Code:	Single Speed
Electrically Isolated Bearing:	Not Electrically Isolated	Motor Standards:	NEMA
Feedback Device:	NO FEEDBACK	Starting Method:	Direct on line
Front Face Code:	Standard	Thermal Device - Bearing:	NONE (OLD)
Front Shaft Indicator:	None	Thermal Device - Winding:	Normally Closed Thermostat
Heater Indicator:	No Heater	Vibration Sensor Indicator:	No Vibration Sensor
Insulation Class:	F	Winding Thermal 1:	None
		Winding Thermal 2:	None

Nameplate NP1279L										
CAT.NO.	UCLE153									
SPEC.	35E2504T138G1									
HP	1.5-3									
VOLTS	230									
AMP	12.5									
RPM	3450									
FRAME	145TZ			HZ	60			PH	1	
SER.F.	1.15			CODE	G		DES	L	CL	F
NEMA-NOM-EFF	78			PF	95					
RATING	40C AMB-CONT									
CC							USABLE AT 208V	13.7		
DE	6206			ODE	6203					
ENCL	TEAO			SN						

Nameplate NP1263L	
CAT.NO.	UCLE153
SPEC.	35E2504T138G1
HP	1.5-3
VOLTS	230
AMP	12.5
RPM	3450
FRAME	145TZ
	HZ 60
	PH 1
SER.F.	1.15
	CODE G
	DES L
	CL F
NEMA-NOM-EFF	78
	PF 95
RATING	40C AMB-CONT
CC	USABLE AT 208V 13.7
DE	6206
	ODE 6203
ENCL	TEAO
	SN

Parts List		
Part Number	Description	Quantity
SA277559	SA 35E2504T138G1	1.000 EA
RA264109	RA 35E2504T138G1	1.000 EA
OC3035F09SP	CYL OIL CAP 35MFD/370V	1.000 EA
EC1216C06SP	ELEC CAP, 216-259 MFD, 250V, 2.06D X 4.	1.000 EA
WD3006A01	RSS-2-103JT 2W 10K RES. METAL OXIDE 5%	1.000 EA
HA6021A01SP	ADAPTOR, MACH	1.000 EA
36GS5000	GASKET CONDUIT ADAPTOR	1.000 EA
51XB1016A08	10-16X 1/2HXWSSLD SERTYB	2.000 EA
11XW1032G06	10-32 X .38, TAPTITE II, HEX WSHR SLTD U	1.000 EA
35EP3122F00	MASTER ODE,203 BRG,#26 DRN	1.000 EA
51XW0832A07	8-32 X .44, TAPTITE II, HEX WSHR SLTD SE	2.000 EA
35CB4802A02SP	CAPACITOR COVER, STAMPED X	2.000 EA
35GS3001A02	GASKET, CA.COVER, 5.38 LONG .06 CS301	2.000 EA
51XB1016A05	10-16X5/16HX WA SL SR TYB (F/S)	4.000 EA
HW5100A03	WAVY WASHER (W1543-017)	1.000 EA
10XN2520A24	1/4-20X 1 1/2 HEX HD X	2.000 EA
HW1001A25	LOCKWASHER 1/4, ZINC PLT .493 OD, .255 I	2.000 EA
35EP3113B06	PU EP ENCL,06 BRG, SEAL, W/O GREASER	1.000 EA
HW4600B50	SEAL 1.156 X 1.874 X 0.250 SINGLE LIP DB	1.000 EA
HW4600B36SP	V-RING SLINGER 1.188 X 1.690 X .24 VITON	1.000 EA
XY1032A02	10-32 HEX NUT DIRECTIONAL SERRATION	4.000 EA
HW2501D13	KEY, 3/16 SQ X 1.375	1.000 EA
HA7000A01	KEY RETAINER 7/8" DIA SHAFT	1.000 EA
85XU0407S04	4X1/4 U DRIVE PIN STAINLESS	2.000 EA

Parts List (continued)		
Part Number	Description	Quantity
ML1400DF14	14 AWG,BLANK,GREEN w/YELLOW STRIPE	36.000 IN
WD1000H04	HOLL#R4161SFT,INSL.RING,16-14 GA,#10 STU	1.000 EA
WD1000A15	3-520132-2 AMP FLAG (4M/RL NON-CANC/NON-	2.000 EA
MG1025C02	WILKOFASG SG, 787.105, TAN	0.017 GA
SP5181A12	MODEL 35 LC TORQ STAT SWITCH LEAD ASSY	1.000 EA
HA3100A24	THRUBOLT 10-32 X 10.625	4.000 EA
LB1119N	WARNING LABEL	1.000 EA
LC0017	CONN LABEL-1 PHASE-SINGLE VOLT-REV ROTNO	1.000 EA
NP1279L	ALUM FARM DUTY UL CSA CC	1.000 EA
NP1263L	AUX, GP, ALUM, CC, LASER ETCHED	1.000 EA
36PA1000	PKG GRP, PRINT PK1016A06	1.000 EA
FE-0000001	ZRTG FE ASSEMBLY	1.000 EA
MN416A01	TAG-INSTAL-MAINT no wire (1200/bx) 5/18	1.000 EA

Accessories		
Part Number	Description	Multiplier
35-1325	C FACE KIT	A8

AC Induction Motor Performance Data

Record # 55935 - Typical performance - not guaranteed values

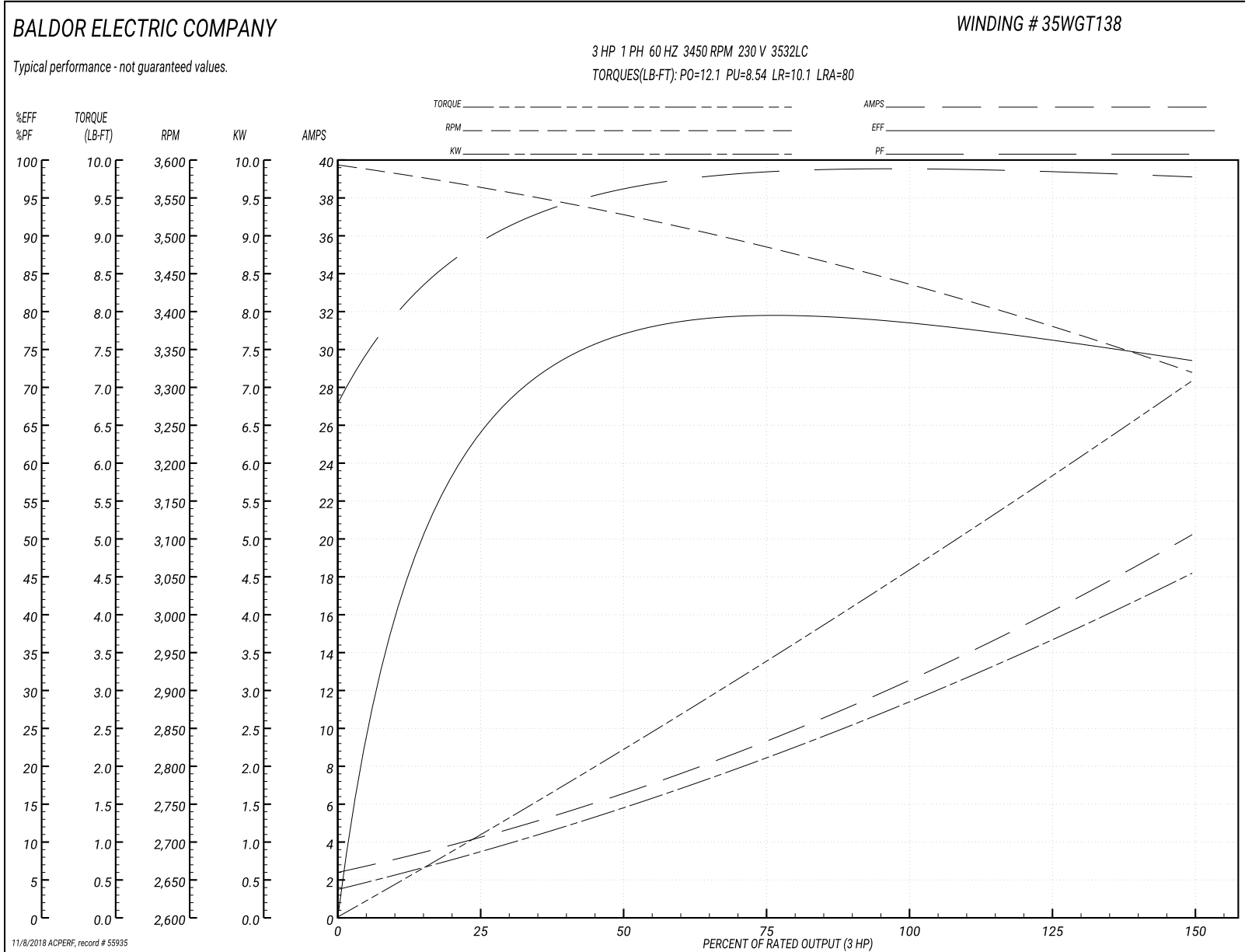
Winding: 35WGT138-R005	Type: 3532LC	Enclosure: TEAO
-------------------------------	---------------------	------------------------

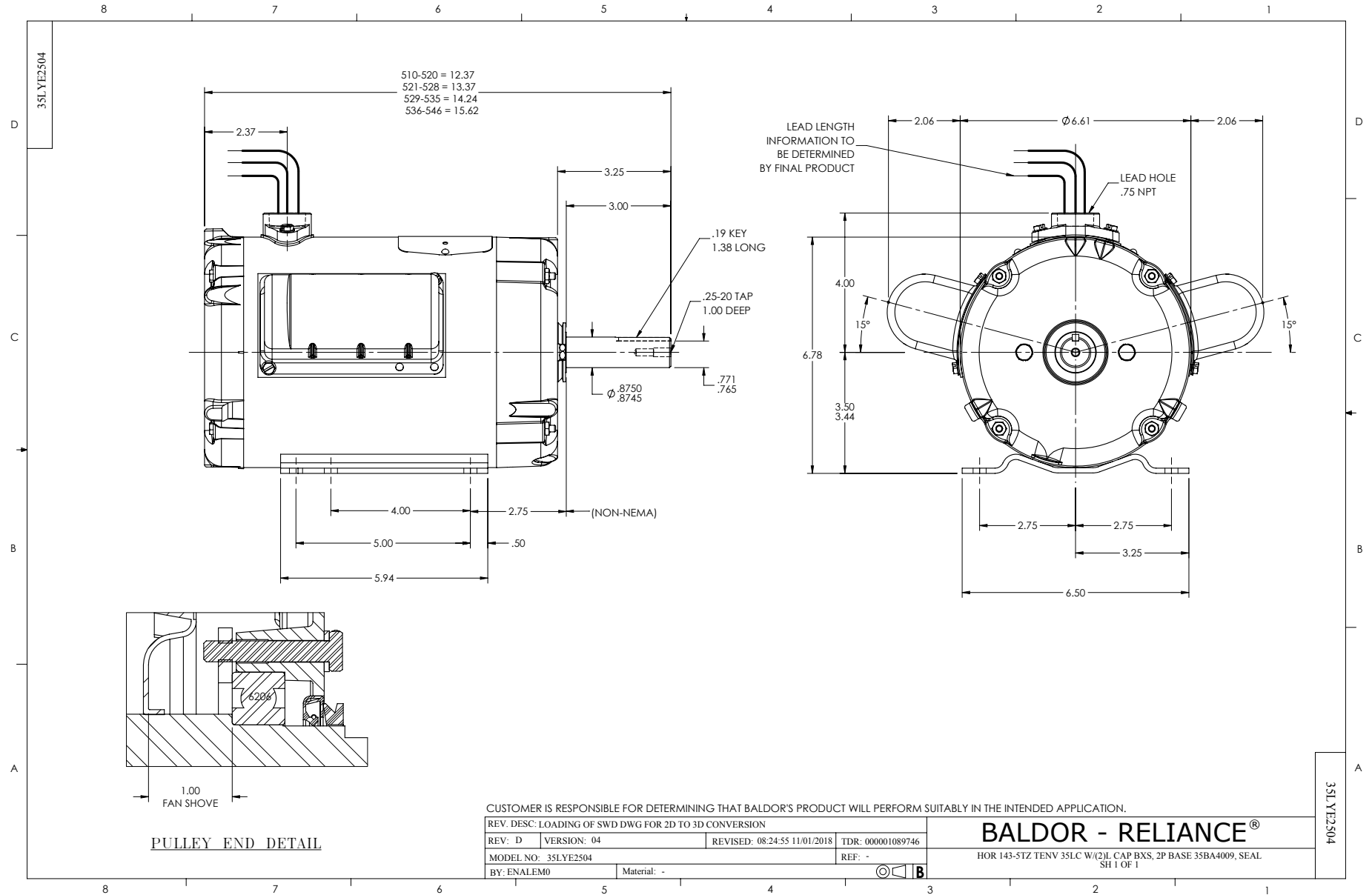
Nameplate Data				230 V, 60 Hz: Single Voltage Motor	
Rated Output (HP)	1.5-3			Full Load Torque	4.54 LB-FT
Volts	230			Start Configuration	direct on line
Full Load Amps	12.5			Breakdown Torque	12.1 LB-FT
R.P.M.	3450			Pull-up Torque	8.54 LB-FT
Hz	60	Phase	1	Locked-rotor Torque	10.1 LB-FT
NEMA Design Code	L	KVA Code	G	Starting Current	80 A
Service Factor (S.F.)	1.15			No-load Current	2.36 A
NEMA Nom. Eff.	78	Power Factor	95	Line-line Res. @ 25°C	0.80752 Ω A Ph 1.4854 Ω B Ph
Rating - Duty	40C AMB-CONT			Temp. Rise @ Rated Load	

Load Characteristics 230 V, 60 Hz, 3 HP

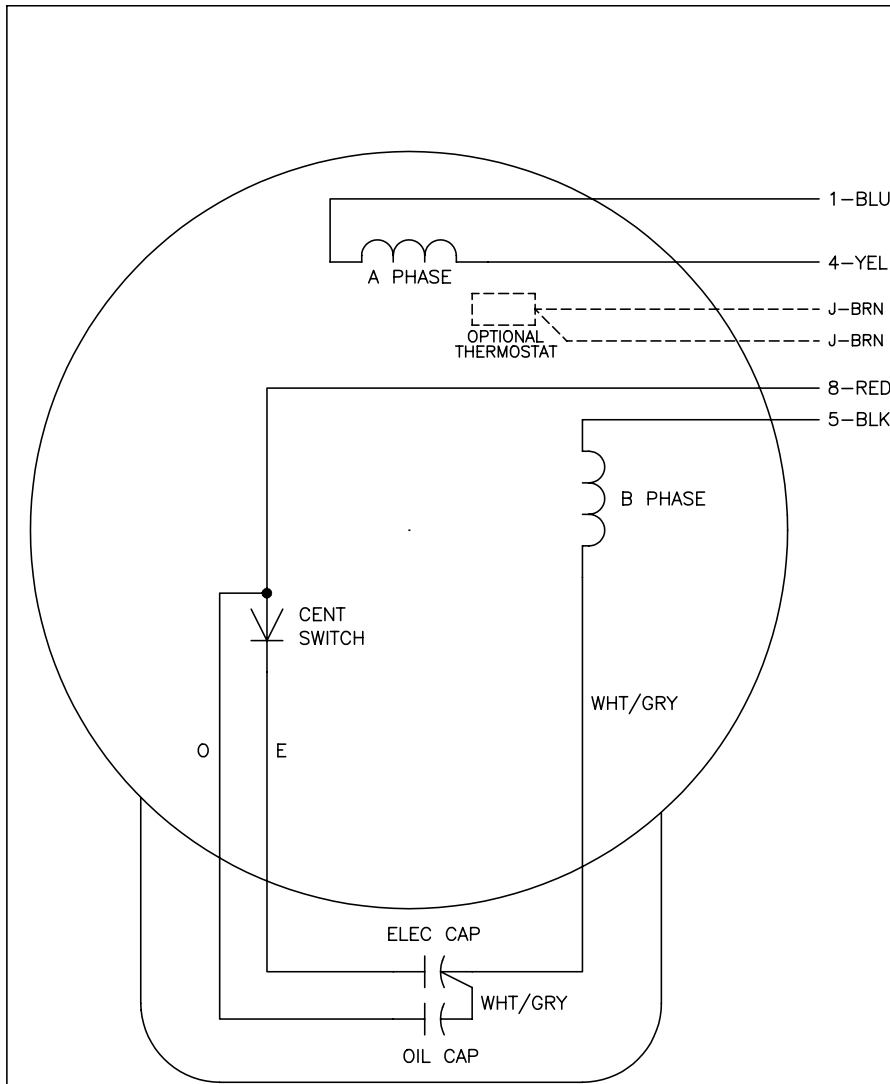
% of Rated Load	25	50	75	100	125	150	S.F.
Power Factor	91	97	98	98	98	98	98
Efficiency	62.1	75.7	79.6	79.1	77	73.1	77.8
Speed	3556.5	3524.6	3486.3	3442.2	3384.1	3316.4	3407
Line amperes	4.28	6.66	9.37	12.4	16	20.3	14.6

Performance Graph at 230V, 60Hz, 3.0HP Typical performance - Not guaranteed values





CD0017A02



	LINE A	LINE B
STD	1,8	4,5
OPP	1,5	4,8

NOTES:

1. STANDARD ROTATION IS CCW FACING END OPPOSITE SHAFT EXTENSION.
2. OPTIONAL THERMOSTAT IS PROVIDED WHEN SPECIFIED.
3. MULTIPLE CAPACITORS ARE CONNECTED IN PARALLEL UNLESS OTHERWISE SPECIFIED.
4. LEAD COLORS ARE OPTIONAL. LEADS MUST ALWAYS BE NUMBERED AS SHOWN.

REV. DESC: REVISE TO SHOW OPTIONAL COLORS			
REV. LTR: B	BY: JLP	REVISED: 04/09/99 11:30	TDR: 0178636
CD0017A02		FILE: AAA00007514	MDL: -
		MTL: -	

BALDOR ELECTRIC Co.

TYPE LC, SV, REV, 4 LEADS

CD0017A02